



Please note: Not all frames, finishes, linings or fuel effects illustrated throughout this brochure may be available as a stock item. Please discuss your requirements with your retailer to confirm availability before ordering.

STUDIO GAS FIRES



A Warm Welcome

Nothing creates an inviting atmosphere quite like a Gazco fire. The centrepiece of any home, a Gazco fire adds warmth and character to a room or living space - even if you don't have a chimney!

Whether you want to achieve an up-to-the-minute, contemporary look or have your heart set on a more traditionally designed fire, this brochure will help you make the perfect choice, whatever your style or budget.

Relax - it's a Gazco Fire...

When you choose Gazco, quality and innovative technology are assured. From traditional models to contemporary designs, Gazco is committed to creating the ultimate flame-effect gas and electric fires.

Our research and development laboratories are amongst the most advanced in the world, ensuring that the very latest innovations are incorporated into our appliances.

Gazco is an ISO9001 accredited company. Our rigorous quality control system ensures that all our appliances comply with British safety standards as well as stringent European regulations. All fires in this brochure are CE marked. This means they have been independently tested to exacting European standards for safety as well as both heating efficiency and emissions.

Warranty

The Fireplace will provide you with a Two Year Warranty for your new gas fire. Full warranty terms & conditions are available to view at www.thefireplace.co.nz



Studio 2 Verve in Graphite, Glass Fronted with log-effect fuel bed & Vermiculite Lining.

Choosing The Right Studio Fire For Your Home...

The Studio is a versatile and diverse range of fires, with each model having its own special features ranging from visual appeal to heating performance and styling options to installation possibilities.

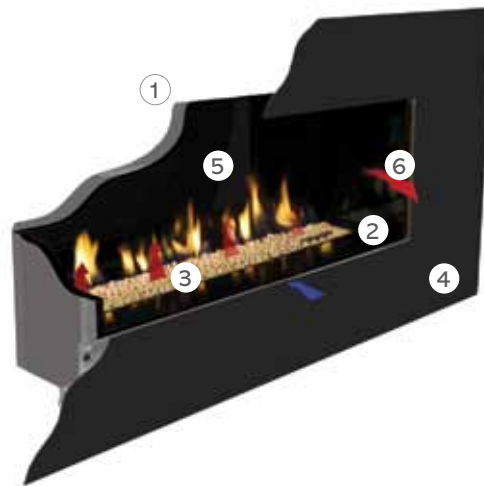
Depending on the model, there is a wealth of options for both conventional flue Open Fronted fires and balanced flue Glass Fronted fires installations.

Our near invisible Glass Fronted fires have greatly increased heating efficiency whilst maintaining all the visual appeal of the Open Fronted Studios. The balanced flue options make installation possible for most homes, even those without a chimney!

	Studio 1	Studio 2	Studio 3	Studio 22	Studio Slimline	Studio Duplex
Conventional Flue Open Fronted	✓	✓	✓	x	x	x
Balanced Flue Glass Fronted	✓	✓	✓	✓	✓	✓

Conventional Flue Open Fronted Studio Key Features

1. Conventional Flue
2. Open Fronted
3. Choice of contemporary white stone or glass bead fuel effects
4. Choice of frame styles
5. Optional Granite linings
6. Radiant heat
7. Sequential remote control included*
8. External battery holders for ease of battery change*
9. Touch Control Panel*
10. Sequential system mains adaptor*
11. Optional flue gather* - please consult your retailer



Balanced Flue Glass Fronted Studio Key Features

1. Balanced Flue connection
2. Variety of flueing options for location flexibility
3. Glass Fronted models
4. Choice of contemporary white stone, glass bead or realistic log fuel effects
5. Choice of linings
6. Choice of frame styles
7. Convected and radiant heat
8. Convected heat system outlet
9. Simple drop down door for easy maintenance access
10. External battery holders for ease of battery change*
11. Touch Control Panel*
12. Thermostatic remote control included*
13. Thermostatic system mains adaptor*



* Not illustrated

* Not illustrated

Remote Controls

All Open Fronted fires in the Studio range are supplied with a state-of-the-art Sequential remote control as standard, allowing you to operate everything from ignition to flame height and heat output from the comfort of your sofa. The Glass Fronted Studios come complete with the new look Thermostatic remote that also includes the additional benefits of a programmable timer and thermostatic controls, ensuring that whenever you return home, your house will always be warm and welcoming. Should you mislay your handset, all Studio fires also come complete with a flat Touch Control panel that can be discreetly wall mounted up to 2.5 metres away from the fire allowing you to ignite, extinguish and control the flame height with ease.



Sequential remote & flat Touch Control panel for Open Fronted Studio fires



Thermostatic remote & flat Touch Control panel for Glass Fronted Studio fires

Studio Sizes



Studio 1

- Open (CF) and Glass Fronted (BF)
- White Stone, Glass Bead or Log effects



Studio 2

- Open (CF) and Glass Fronted (BF)
- White Stone, Glass Bead or Log effects



Studio 3

- Open (CF) and Glass Fronted (BF)
- White Stone, Glass Bead or Log effects (NG only)



Studio 1 Slimline

The high efficiency Slimline has been specifically designed for cavity wall installations.

- Glass Fronted (BF)
- White Stone, Glass Bead or Log effects



Studio 2 Duplex

A double-sided high efficiency fire which can be enjoyed from two rooms at once!

- Glass Fronted (BF)
- Log effect



Studio 22

A high efficiency Glass Fronted fire with a distinctive portrait form.

- Glass Fronted (BF)
- Log effect

Fuel effects



Glass Fronted Studio with Log-effect



Open Fronted Studio with White Stones



Red, Black & Clear Glass Beads (*indent only*)

Please note that the Red Glass beads will darken when burning and then return to their original colour when cool.

Studio Lining Options

Depending on model, several Gazco Studio fires can be customised with a choice of lining options, each offering a dramatically different aesthetic for your fire. The Open Fronted Studios have a black steel interior, that can be upgraded to a polished black granite lining to boost the reflective qualities. Glass Fronted Studios with a log-effect fire can be specified with either a vermiculite or black reeded lining†. Glass Fronted Studios with a white stone or glass bead fuel bed have an enamelled lining only. The exception to these are the Studio 1 Slimline fires, where an additional option of a brick-effect lining is available alongside the vermiculite or black reeded options (see pages 10 for full details on Slimline Studio options).

† Studio 22 models have a Vermiculite lining only



Vermiculite Lining
(Available with Log-effect Studios)



Black Reeded Lining
(Available with Log-effect Studios - *indent only*)



Polished Black Granite
(Open Studio Upgrade)

STUDIO EDGE

Fire Sizes:	Studio 1, 2, 3, 22, Slimline & Duplex
Fuel effects:	White Stone, Glass Bead & Logs
Options:	Open & Glass fronted



STUDIO VERVE

Fire Sizes:	Studio 1, 2, 3, 22, Slimline & Duplex
Fuel effects:	White Stone, Glass Bead & Logs
Options:	Open & Glass fronted



STUDIO STEEL2

Fire Sizes:	Studio 1, 2, 3, 22, Slimline & Duplex
Fuel effects:	White Stone, Glass Bead & Logs
Options:	Open & Glass fronted



STUDIO PROFIL

Fire Sizes:	Studio 1, 2, 3, 22, Slimline & Duplex
Fuel effects:	White Stone, Glass Bead & Logs
Options:	Open & Glass fronted
Finishes:	Stainless Steel/Anthracite



Coloured Frame Options

For those who want to add a splash of colour to their living space, Studio Steel2, Bauhaus, Profil and Verve frames are also available in four eye-catching colours; Metallic Red, Metallic Blue, Metallic Bronze and Ivory*. For full details, please see page 11. * Indent only

STUDIO GLASS

Fire Sizes:	Studio 1, 2, 3, Slimline & Duplex
Fuel effects:	White Stone, Glass Bead & Logs
Options:	Open & Glass fronted



Studio 2 Glass, Glass Fronted with log-effect fuel bed & Black Reeded Lining

STUDIO BAUHAUS

Fire Sizes:	Studio 1, 2, 3, 22, Slimline & Duplex
Fuel effects:	White Stone, Glass Bead & Logs
Options:	Open & Glass fronted
Finishes:	Stainless Steel/Anthracite



Studio 2 Bauhaus in Stainless Steel, Glass Fronted with log-effect fuel bed & Black Reeded Lining



Studio 3 Bauhaus in Stainless Steel, Glass Fronted with log-effect fuel bed & Vermiculite Lining

STUDIO 22

The stunning glass fronted Studio 22 offers the option of adding portrait styling to your living space. Specifically designed to add vertical presence, this portrait fire will instantly become a focal point in any interior, whether installed either as a frameless Edge or with one of the many frame options available.



Studio 22 Bauhaus in Stainless Steel with log-effect fuel bed

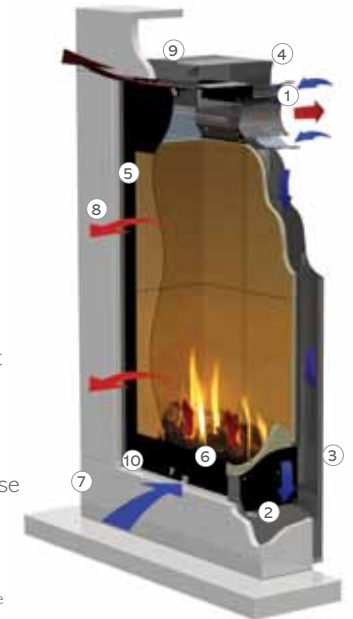


Studio 22 Sorrento in Natural Limestone with log-effect fuel bed

Fire Sizes:	Studio 22
Fuel effects:	Logs
Options:	Glass fronted

Key Features

1. Balanced Flue connection
2. Shallow firebox depth
3. Flat wall installation†
4. Top or rear flue options for location flexibility†
5. Glass Fronted
6. Realistic log-effect fire
7. Choice of frame styles
8. Convected and radiant heat
9. Convected heat system outlet
10. Easy maintenance access
11. Thermostatic remote control included*
12. External battery holder for ease of battery change*
13. Touch Control Panel*



† Rear exit only when combined with Sorrento frame
* Not illustrated

STUDIO SLIMLINE

Natural Gas



The Glass Fronted Studio 1 Slimline has been specifically developed to allow the highly desirable aesthetics of the landscape Studio fires to be achieved in a wider variety of homes by simply recessing into the internal leaf of a cavity wall.

Although compact in design, this highly efficient fire has a heat output of up to 4.25kW and comes complete with Gazco's very latest Thermostatic remote control so you can operate everything from ignition to extinguish with total ease.

Key Features

1. Shallow firebox depth of just 155mm
2. Balanced Flue connection
3. Choice of linings
4. Choice of contemporary or realistic fuel effects
5. Choice of frame styles
6. Convected and radiant heat
7. Convected heat system outlet
8. Thermostatic remote control
9. Rear exit Balanced Flue Termination Kit included*

* Not illustrated



Slimline Frame Options

The Studio 1 Slimline can be installed as a minimalist Edge model with its frameless design or for added impact it can be styled with one of our many high quality frames available, a selection of which are shown on these pages (please also see technical information on page 10 and additional image on page 11). However, for a complete frame style reference for the Studio Slimline, please see pages 5 and 6.

Fuel Effects and Lining Options

To further extend your options for personalisation, there is a choice of two linings and three fuel effects available for the Studio 1 Slimline. Each of the lining choices: contemporary vermiculite or timeless black reeded can be paired with either realistic log or contemporary white stone fuel effects with the additional option to upgrade your white stones to one of three glass bead effects.



Vermiculite Lining



Black Reeded Lining (indent only)

With each combination offering a significantly different appearance to the fire, you can be sure to select the perfect combination of fuel effect, lining and frame style to suit your interior decor.



Studio 1 Slimline Glass, Glass Fronted with White Stone fuel bed & Black Reeded Lining. Inset: Upgradable Red, Black & Clear Glass Bead fuel effects.

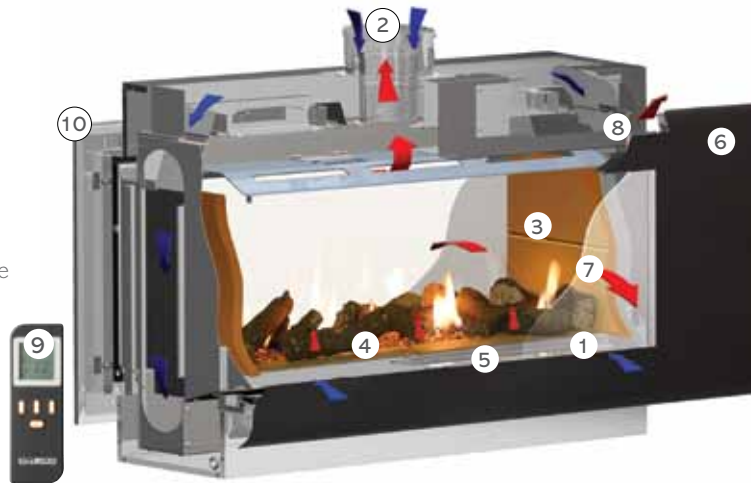
STUDIO DUPLEX



The Gazco Studio range has long been appreciated for its widescreen flame picture, high efficiency output and broad selection of frame style choices. The new Glass Fronted Studio 2 Duplex has been introduced to allow these fabulous features along with a heat output of up to 7.9kW to be enjoyed from two rooms at once from the same fire. The Studio Duplex also includes a wonderfully realistic log-effect fuel bed with hand-finished detailing and a highly attractive glowing ember effect for the ultimate in real fire ambiance.

Key Features

1. Double Glass Fronted firebox
2. Balanced Flue connection
3. Choice of linings
4. Realistic log-effect fire
5. Realistic Glowing ember feature
6. Wide choice of frame styles
7. Convected and radiant heat
8. Convected heat system outlet
9. Thermostatic remote control
10. Dual styling options



Lining Options



Vermiculite Lining



Black Reeded Lining (indent only)

To further extend your options for personalisation, the Duplex offers a choice of linings, each providing a distinctly different look for your fire. The vermiculite lining will boost the light appeal of the glowing fire, while the black reeded lining will provide a contrasting backdrop that really displays the beautiful flames to their fullest potential.

Duplex Frame Options

The Studio 2 Duplex has the benefit of dual styling possibilities, allowing you to select a different look for each side of the fire - offering double the impact in your home. Whether opting for a minimalist Edge look with its frameless design or a Glass frame with its reflective black glass, there is a selection of frame styles that will attract the eye and enhance your two interior spaces. **See pages 5 and 6 for a complete list** (please also see technical information and additional image on page 11).



Studio 2 Duplex - Glass



Studio 2 Duplex - Bauhaus in Anthracite

Technical Information

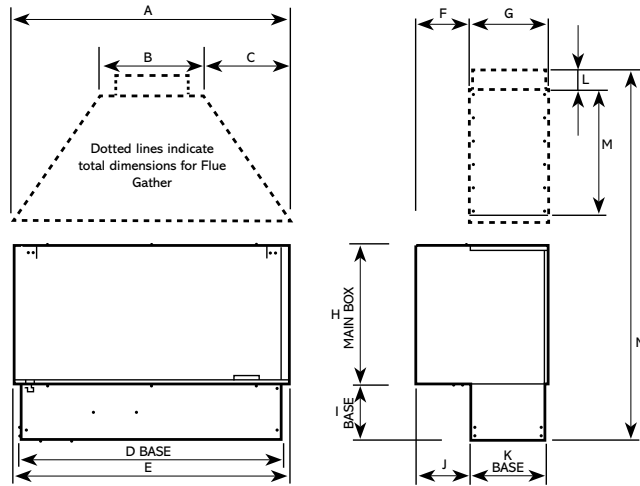
Please note: Not all frames, finishes, linings or fuel effects listed in this section may be available as a stock item. Please discuss your requirements with your retailer to confirm availability before ordering.



Studio 1, 2 & 3 Fire Information

Additional Information For Open Fronted Studio Fires (mm)

Appliance dimensions (mm)



Dimension		Studio 1	Studio 2	Studio 3
A	Gather width	664	864	1254
B	Gather top	250	250	325
C	Gather taper	207	307	465
D	Base width	635	835	1225
E**	Box width	660	860	1250
F	Max. lintel width	130	130	130
G	Gather depth	187	187	187
H**	Box height	334	334	334
I*	Base height	133	133	133
J	Base depth	130	130	130
K	Base	182	182	182
L	Spigot height	50	50	50
M	Gather height	300	300	700
N	Total height	817	817	1217

* adjustable feet can increase base height by up to 235 mm

** If installed with one of the Studio frames, a 5mm space must be left around the front edge of the appliance.

CHIMNEY TYPES

Studio 1

- **Class 1 brick built flue**
 - Can be fitted without the optional flue gather if the chimney is sound.
 - If the optional gather is used, then it must be connected to a 7" flexible flue liner suitable for gas.
- **Pre-fabricated 7" twin wall flue system suitable for gas**
 - Must be fitted with the optional flue gather.

Studio 2 and 3

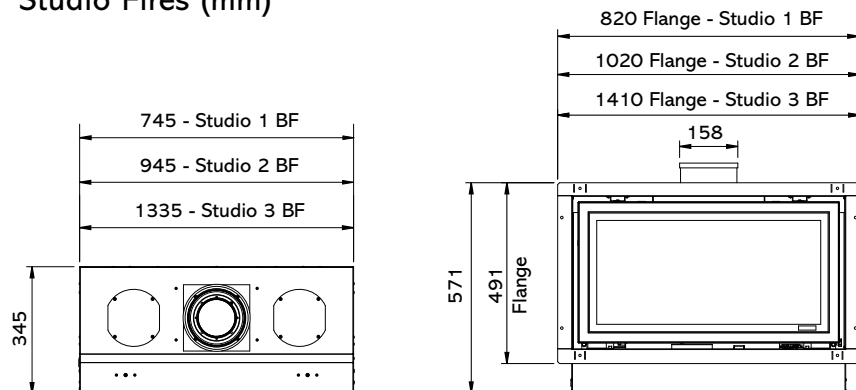
- **Class 1 brick built flue**
 - Must be fitted with the flue gather.
- **Pre-fabricated 7" twin wall flue system suitable for gas**
 - Must be fitted with the flue gather.

Note: it is possible to install the Studio 2 and 3 into a Class 1 brick flue. However, this type of installation should only be undertaken by chimney specialists. This is because it will require the front wall and structure of the chimney breast to be extensively cut away to allow enough width to fit the fire and also provide access to the top of the gather to allow either -

- Connection of a 7" flexible flue liner suitable for gas
- Creation of a smooth transition between the top of the gather and the flue

Please note that carbon/soot deposits may be visible on inner back wall of the Open Fronted Studio fires due to variances in performance of flue systems, particularly in different prevailing weather conditions

Additional Information For Glass Fronted Balanced Flue Studio Fires (mm)



Frame Information For All Studio Fires

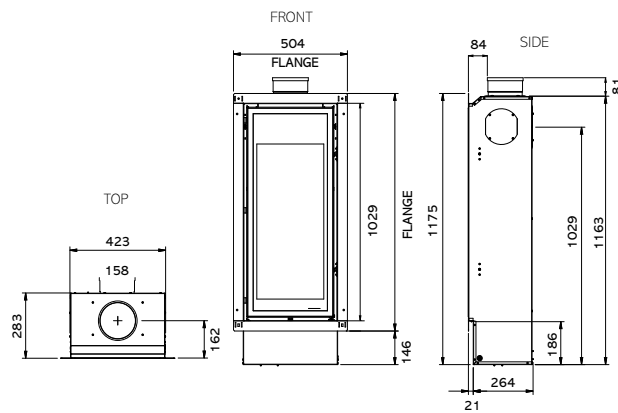
Frame	Open fronted Conventional Flue			Glass Fronted Balanced Flue		
	Studio 1	Studio 2	Studio 3	Studio 1	Studio 2	Studio 3
Edge	Indent	Indent	Indent	Stocked	Stocked	Stocked
Edge Cool Wall	Indent	Indent	Indent	Stocked	Stocked	Stocked
Profil Anthracite	Indent	Stocked	Stocked	Stocked	Stocked	Stocked
Profil Stainless Steel	Indent	Indent	Indent	Indent	Indent	Indent
Verve	Indent	Indent	Indent	Indent	Indent	Stocked
Glass	Indent	Indent	Indent	Indent	Indent	Indent
Steel 2	Indent	Stocked	Stocked	Stocked	Stocked	Stocked
Bauhaus Stainless Steel	Indent	Stocked	Stocked	Stocked	Stocked	Stocked
Bauhaus Anthracite	Indent	Indent	Indent	Indent	Indent	Indent

Studio 22 Fires

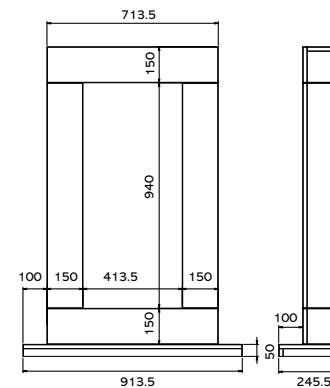
FIRE INFORMATION

Flue Type	Gas Type	Fuel Effect	Heat Input	Heat Output	Efficiency	Remote Control	Lining
⊗ Balanced flue	Nat. Gas	Logs	7.50kW	5.85kW	78%	Thermostatic	Vermiculite
⊗ Balanced flue	LPG	Logs	7.00kW	5.46kW	78%	Thermostatic	Vermiculite

STUDIO 22 DIMENSIONS (mm)



SORRENTO DIMENSIONS (mm)



FRAME INFORMATION

Description	Frame Finish	Frame Size (mm)		
		w	h	d
Bauhaus	Anthracite	524	1050	28
Bauhaus	Polished Stainless	524	1050	28
Profil ^A	Anthracite	510	1036	13
Profil	Polished Stainless	510	1036	13
Steel	Graphite	675	1320	13
Steel	Iridium	675	1320	13
Verve	Graphite	676	1320	53
Sorrento*	Natural Limestone	914	1290	246
Sorrento* ^A	Graphite Granite	914	1290	246

^A Indent only

* Where the Studio 22 is fitted with a Sorrento surround the fire may only be installed using the rear flue exit.

† For more Balanced Flue information and options please refer to our Concentric Flue System brochure which can be viewed or downloaded online at www.gazco.com

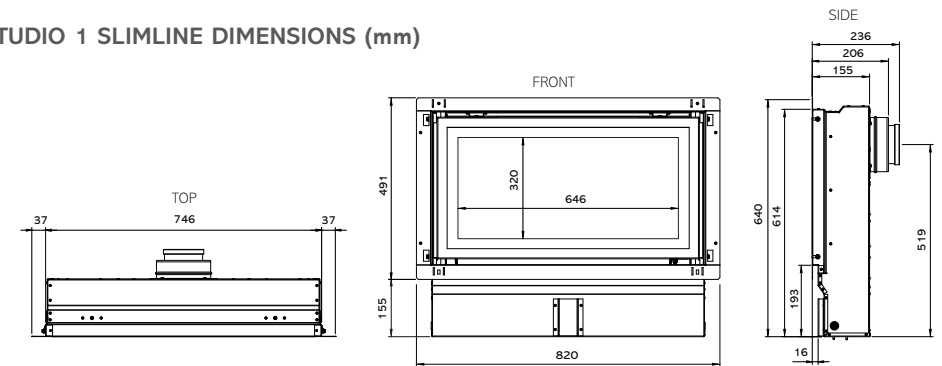
⊗ All fires shown with this symbol have the advantage of not normally requiring an air vent. Please discuss this in full with your local retailer to ensure any local/national regulations are complied with.

Studio 1 Slimline Fires

FIRE INFORMATION

Flue Type	Gas Type	Fuel Effect	Heat Input	Heat Output	Efficiency	Remote Control	Lining
⊗ Balanced flue	Nat. Gas	Logs	5.2kW	4.3kW	82%	Thermostatic	Vermiculite
⊗ Balanced flue	LPG	Logs	5.1kW	4.2kW	82%	Thermostatic	Vermiculite
⊗ Balanced flue	Nat. Gas	White Stones	5.2kW	4.3kW	82%	Thermostatic	Vermiculite
⊗ Balanced flue	LPG	White Stones	5.1kW	4.2kW	82%	Thermostatic	Vermiculite
⊗ Balanced flue	Nat. Gas	Logs	5.2kW	4.3kW	82%	Thermostatic	Black Reeded
⊗ Balanced flue	LPG	Logs	5.1kW	4.2kW	82%	Thermostatic	Black Reeded
⊗ Balanced flue	Nat. Gas	White Stones	5.2kW	4.3kW	82%	Thermostatic	Black Reeded
⊗ Balanced flue	LPG	White Stones	5.1kW	4.2kW	82%	Thermostatic	Black Reeded

STUDIO 1 SLIMLINE DIMENSIONS (mm)



FRAME INFORMATION

Description	Frame Finish	Frame Size (mm)		
		w	h	d
Bauhaus ^A	Anthracite	850	524	28
Bauhaus	Polished Stainless	850	524	28
Profil ^A	Anthracite	836	510	13
Profil	Polished Stainless	836	510	13
Steel2	Graphite	1264	528	30
Steel2	Iridium	1264	528	30
Verve	Graphite	1264	528	56
Glass ^A	Black Glass	1264	528	33.5

The Studio 1 Slimline comes complete with rear exit balanced flue termination kit (8526SL) included.

◇ Available as a retro-fit solution to replace and enliven any White Stone Studio fires. Please note: the red glass bead fuel effect transforms into a rich dark burgandy when the fire is on.

^A Indent only

‡ Available as an upgrade to Studio fires with a log effect fuel bed

STUDIO 1 SLIMLINE OPTIONS

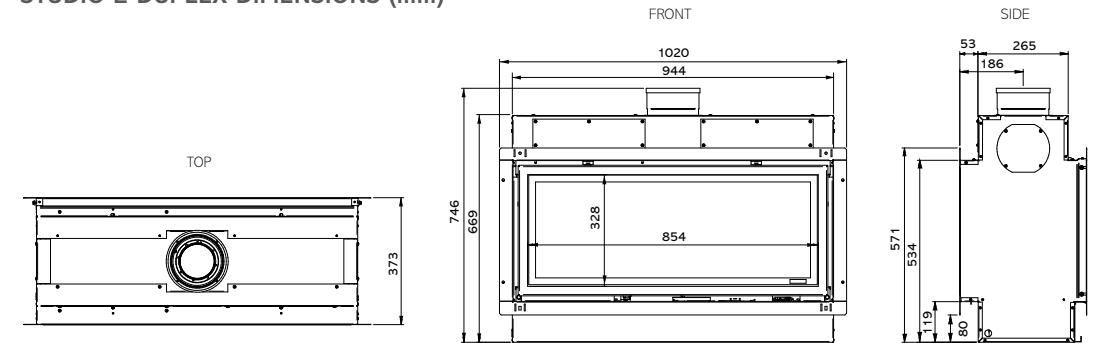
Description
Edge fitting kit for BF †
Cool Wall fitting kit for BF†
Slimline - Vermiculite Lining Set ‡
Slimline - Black Reed Lining Set ‡
Clear glass fuel effect upgrade ◇
Black glass fuel effect upgrade ◇
Red glass fuel effect upgrade ◇
Thermostatic system mains adaptor

Studio 2 Duplex Fires

FIRE INFORMATION

	Flue Type	Gas Type	Fuel Effect	Heat Input	Heat Output	Efficiency	Remote Control	Lining
⊗	Balanced flue	Nat. Gas	Logs	9.6kW	7.9kW	82%	Thermostatic	Vermiculite
⊗	Balanced flue	LPG	Logs	9.3kW	7.6kW	82%	Thermostatic	Vermiculite
⊗	Balanced flue	Nat. Gas	Logs	9.6kW	7.9kW	82%	Thermostatic	Black Reeded
⊗	Balanced flue	LPG	Logs	9.3kW	7.6kW	82%	Thermostatic	Black Reeded

STUDIO 2 DUPLEX DIMENSIONS (mm)



Studio 1 Slimline Edge, Glass Fronted with log-effect fuel bed & Black Reeded Lining.



Studio 2 Duplex Profil frame in Anthracite, Glass Fronted with log-effect fuel bed & Vermiculite Lining.

FRAME INFORMATION

Description	Frame Finish	Frame Size (mm)		
		w	h	d
Bauhaus ^A	Anthracite	1050	524	28
Bauhaus	Polished Stainless Steel	1050	524	28
Profil	Anthracite	1036	510	13
Profil ^A	Polished Stainless Steel	1036	510	13
Steel2	Graphite	1500	528	30
Steel2	Iridium	1500	528	30
Verve	Graphite	1500	528	56
Glass ^A	Black Glass	1500	528	33.5

^A Indent only

† For more Balanced Flue information and options please refer to our Concentric Flue System brochure which can be viewed or downloaded online at www.gazco.com

⊗ All fires shown with this symbol have the advantage of not normally requiring an air vent. Please discuss this in full with your local retailer to ensure any local/national regulations are complied with.



A choice of four colours is available to choose from on Studio Profil and Bauhaus Anthracite Fronts and Steel 2 and Verve Graphite fronts (Indent only - see page 5): **Metallic Red (RD)**, **Metallic Blue (BL)**, **Metallic Bronze (BZ)** and **Ivory (IV)**

STUDIO 2 DUPLEX OPTIONS

Description

Edge fitting kit for BF †
Cool Wall fitting kit for BF†
Warm air ducting kit (2 outlets)
Duplex - Vermiculite Lining Set
Duplex - Black Reed Lining Set
Balanced flue kit - up and out†
Balanced flue kit - vertical†
Horizontal Exit terminal guard (required for below 2m)†
Thermostatic system mains adaptor



Studio 3 Verve in Graphite, Open Fronted with White Stone fuel bed

GAZCO
Fire Your Imagination

DISTRIBUTED BY

 **the
fireplace**

www.thefireplace.co.nz • www.gazco.com

AUCKLAND , 12 Tawari Street, Mt Eden

Auckland - Tel: 09 623 6990

Christchurch - Tel: 03 348 8011

Freephone - Tel: 0800 538 627

© Copyright Gazco Ltd 2013 E & O E